

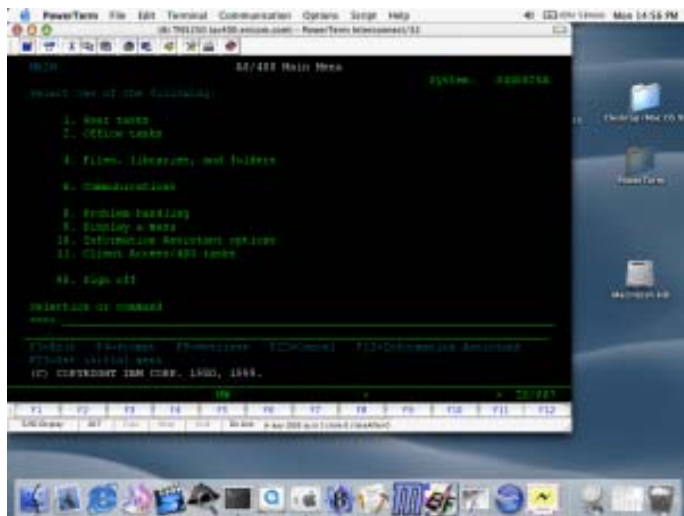
# PowerTerm Interconnect (MAC OS X® Edition)

The native host access solution

PowerTerm InterConnect (Mac OS X Edition) is Ericom Software's proven host connectivity solution for organizations requiring fast and accurate access to data residing on the broadest and widest range of hosts on the market today. This includes support for IBM, Compaq, Digital, Unix, Tandem, Televideo, HP, SCO, Data General and more. PowerTerm InterConnect is the complete Apple MAC multiple host information access solution working on the MAC OS X platform.

## Seamless Connectivity from MAC-to-Host

The PowerTerm InterConnect terminal emulator maximizes enterprise-wide productivity by enabling reliable access to accounting, inventory management, transaction processing and other mission-critical legacy applications. It provides seamless connectivity to the widest range of machine types and information systems. PowerTerm InterConnect supports IBM, Digital, Wyse, HP, Tandem, Data General, SCO and other terminal emulation types. PowerTerm InterConnect provides a simple, fast and effective means of running legacy applications from within the MAC OS X platform over network, modem or direct serial links from any computer.

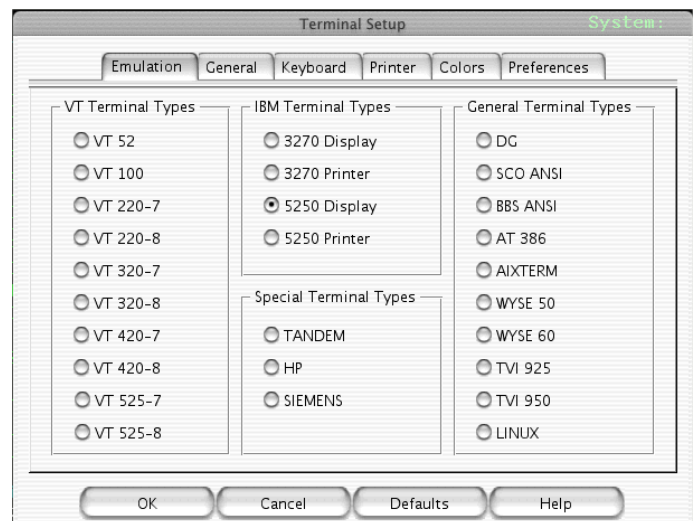


## Maximize Efficiency and Productivity

PowerTerm InterConnect boasts of a robust set of state-of-the-art features and key response times. Features include customizable function keys, multiple concurrent sessions, menu bar, scalable and selectable fonts, intelligent copy and paste, scripting, printing and more. This full-feature client ensures fast, reliable connections for sharing information throughout the enterprise, regardless of host type.

## Simple to Install and Use

This full terminal emulator is less than 9MB in size and is installed onto any Apple running MAC OS X in less than 5 minutes. Its intuitive nature makes it the easiest-to-use emulator today, helping to minimize training and maintenance.



## Technical Specifications

**Platforms Supported** - Apple MAC OS X. **Supported Interfaces** - Ethernet Token Ring, Serial Ports, DSL, Modem. **Communication Modes** - Serial Modem, direct via Port, TCP/IP, Telnet, TN 3270, TN5250, PPP/SLIP. **Screen Support** - Graphical drag & drop keyboard mapping, graphical color selection, customizable function keys, scalable fonts, status line, menu bar, tool bar, 80/132 column width, variable lines per page, double width/height characters, blink & underline attributes, reverse screen support and more. **Language Support** - English, German, French, Spanish, Italian, Greek, Turkish, Danish, Finnish, Portuguese and more. **Other features** - multi-sessions, Power Script Language, script recorder, keep-alive-timeout, keyboard mapping, keyboard property page, language code pages support, automated login, hide menus, print screen, file operations, intelligent copy & paste of blocks/lines/words, status display for host and printer and much more.